



EyeOnBoard Application Software

Quick Start

These instructions should help get your GPS connected and the EyeOnBoard Application Software installed and configured.

EyeOnBoard Quick Start Steps

1. Connect your GPS to your computer.
2. Configure the Windows COM port. (optional)
3. Test the GPS data transfer. (optional)
4. Install EyeOnBoard Application Software.
5. Activate EyeOnBoard Application Software.
6. Configure EyeOnBoard for your GPS.
7. Use the GPS Wizard.
8. Confirm the GPS is operational.
9. Activate On-Board Cameras.

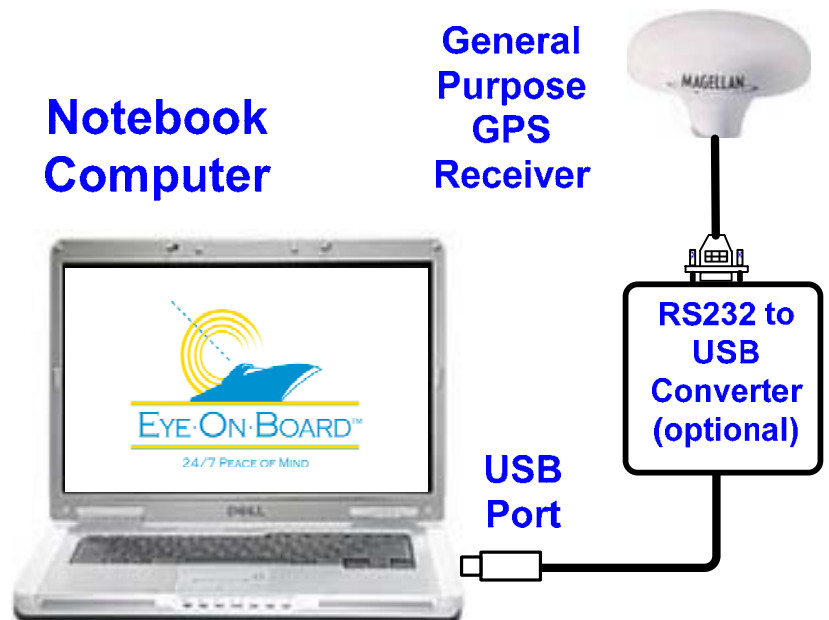
Note: If you have not already created your account and downloaded the EyeOnBoard software, visit www.eyeonboard.com and follow the free trial link to register your account and gain access to the EyeOnBoard Application Software.

1. Connect your GPS to your computer

Refer to the GPS product literature and cabling information provided with your GPS to set up the transfer of NMEA 0183 data from your GPS to your computer.

- You will likely need a cable to connect the GPS to a computer, unless they both support BlueTooth.
- You can use a standard Serial to USB converter cable if your GPS cable has a serial connector and your computer only has a USB connector.
- You will need to know the data speed that the GPS is set to transmit NMEA 0183 data at (4800 usually).
- You will need to know the Windows COM Port used by the GPS when it is connected to your computer (COM2 or COM3 for example).

Note: if you are using a USB GPS, simply plug it into a free USB port, let Windows discover it (you may have to insert the CD which came with the GPS), then proceed directly to step 4 to install the EyeOnBoard Application Software and use the GPS Wizard to identify the COM port that Windows has assigned to your GPS device.



EyeOnBoard Application Software

Quick Start

Step 2 of 9

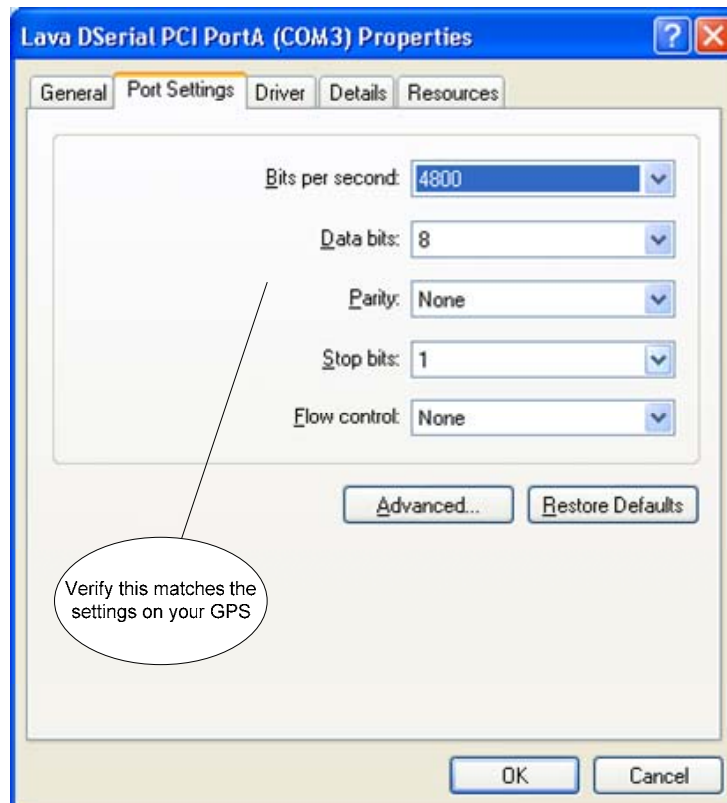
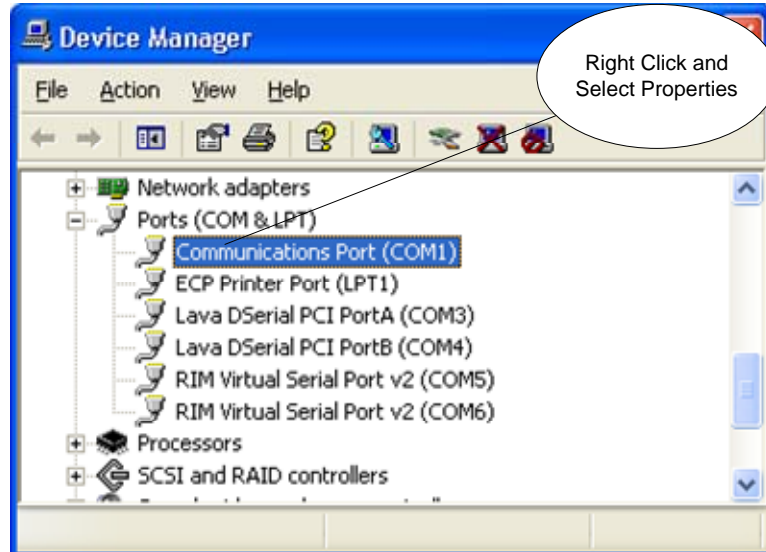
2. Configure the Windows COM Port

The Windows™ COM port needs to be set to match the settings of the GPS for a non-USB GPS.

- Select Start->Control Panel.
- Select System, then select the Hardware Tab.
- Select Device Manager, then select Ports (COM & LPT).
- Select the COM Port the GPS is using.
- Right click on the port the GPS is using, select Properties, then select the Port Settings tab.
- Check and/or correct the settings for the port so they match what your GPS is set to. NMEA devices like the GPS are usually set to 4800 baud, 8 Data Bits, No Parity, 1 Stop Bit, No flow control.

Note: If you are not sure which port is used by the GPS, make a note of all the COM ports available and proceed to step 3 below.

If you have a USB GPS, you can skip this step as Windows will set the speed properly.



EyeOnBoard Application Software

Quick Start

Step 3 of 9

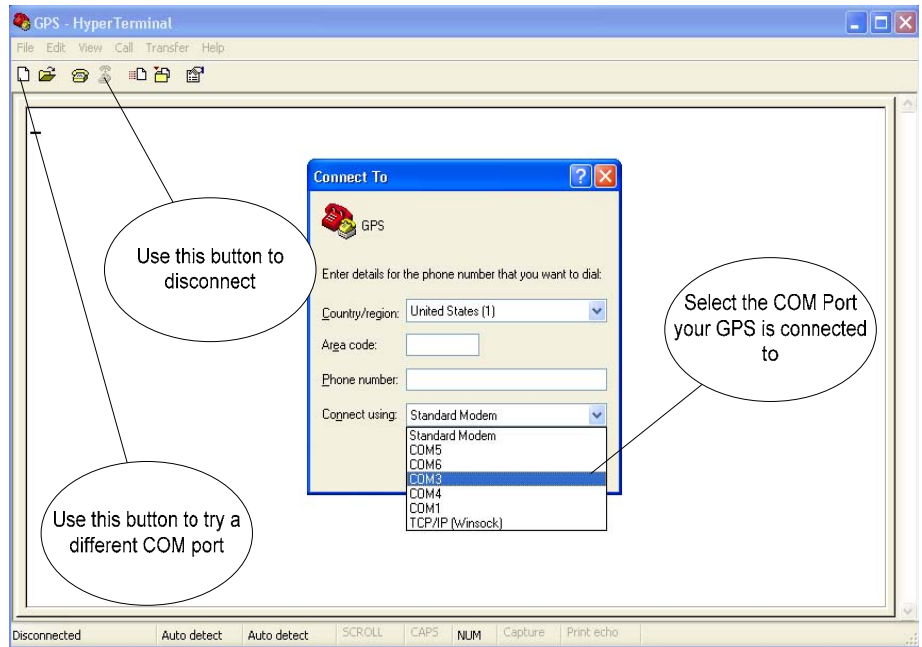
3. Test GPS Data Transfer

Test the data transfer using a Windows XP™ supplied software tool to open and read GPS data from the Windows COM port which the GPS should be sending data to.

- Select Start
 - >All Programs
 - >Accessories
 - >Communications
 - >Hyper Terminal

Note: If you are confident your GPS is connected properly (i.e. it's a USB device) you can also proceed directly to step 4 to install the EyeOnBoard software then use the GPS Wizard.

The HyperTerminal software is not supplied with Windows Vista™.

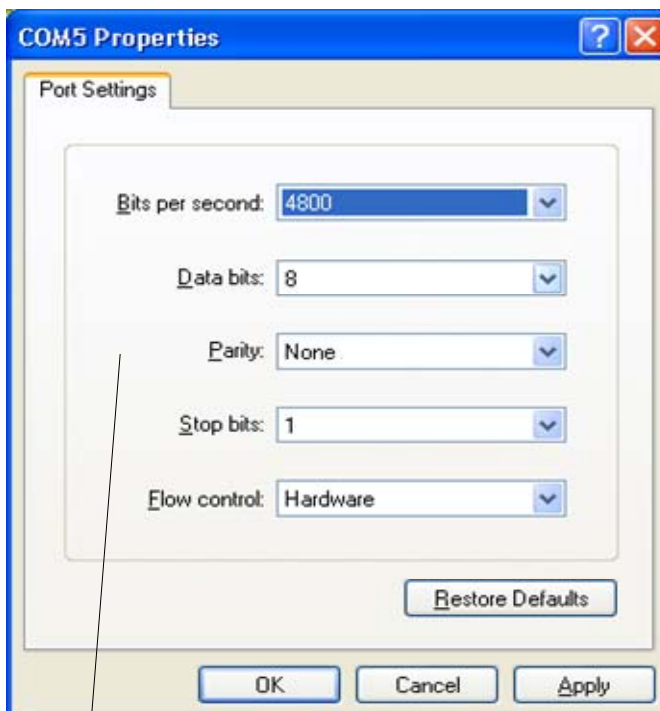


- Open the COM port which the GPS is connected to, check and/or change the speed settings to match the settings on the GPS.
- See if it connects and you can see legible NMEA sentences that look something like this:

\$GPGLL,4906.89,N,12251.68,W

- Keep trying steps 1, 2, and 3 until you can see legible NMEA data in Hyper Terminal. Make a note of the COM port used and the speed and other settings used.

Note: If you already have the EyeOnBoard Application Software installed, you should make sure the NMEA service is stopped before using Hyper Terminal (or the NMEA service will block Hyper Terminal from opening the Windows COM port that the NMEA service is configured to listen on). You can stop this service via the EyeOnBoard LaunchPad. Select More->Service Control, then select NMEA Service and select Stop. The NMEA Service will restart itself automatically every **five minutes**.



EyeOnBoard Application Software

Quick Start

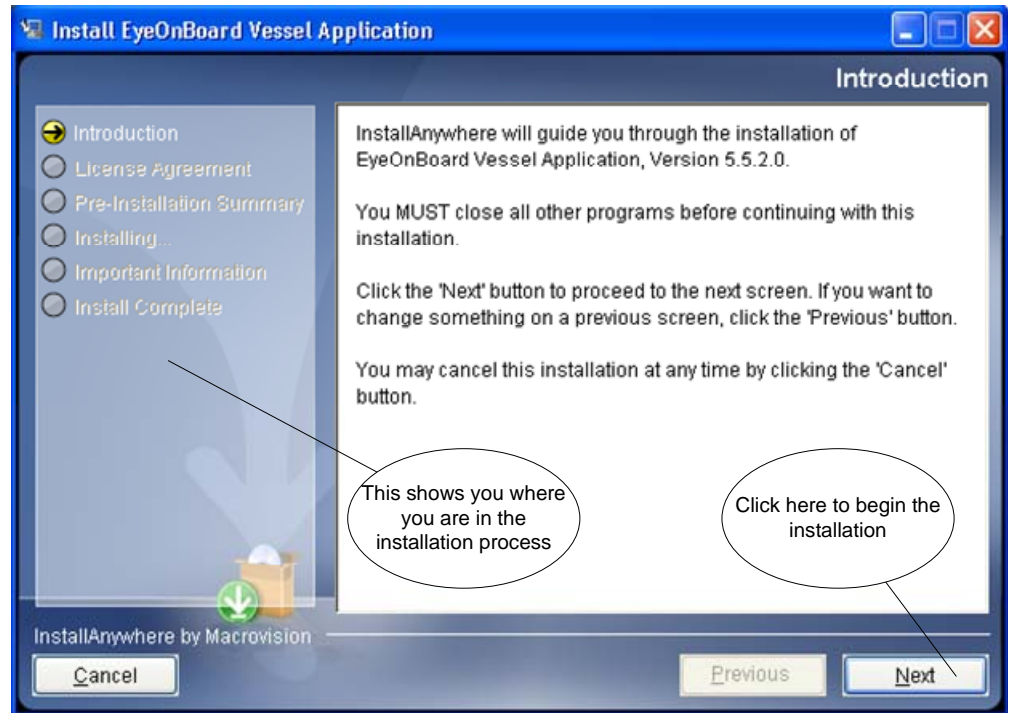
Step 4 of 9

4. Install EyeOnBoard Application Software

After successfully creating your EyeOnBoard account on the EyeOnBoard web site, you will have received an email with a link to the location of the installation software. Follow that link and download the software to a SINGLE onboard computer.

- Run (double click) the Setup program that you have already downloaded from the EyeOnBoard web site.
- Follow the prompts to install the software. It takes a few minutes.
- You will be asked to confirm the installations of a series of software applications. Click on OK or Next or Setup as prompted to proceed through all the installations.
- It is recommended that you accept all the defaults during the installation process except for rebooting, which is only done at the very end of the installation procedure.

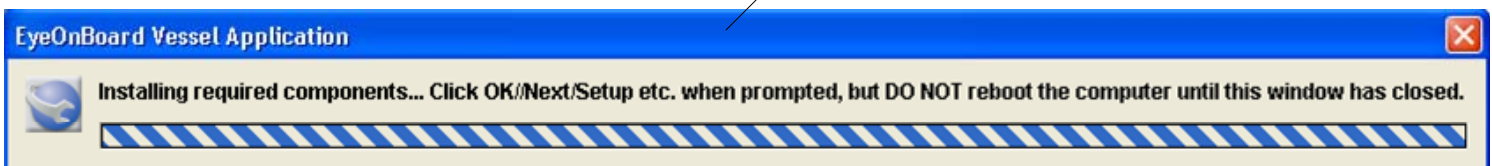
Note: You may be prompted to reboot the computer during the installation process. **Do NOT reboot** the computer until the EyeOnBoard Vessel Application installation has fully completed and the EyeOnBoard Vessel Application installation progress window has closed.



Note: for McAfee Anti Virus users, the option to “Scan for unknown viruses” must be turned off in two places:

- 1) Security Center -> Advanced Menu -> Configure -> Computer & Files -> Virus Protection -> Advanced -> Real Time Scanning
- 2) Security Center -> Advanced Menu -> Configure -> Computer & Files -> Virus Protection -> Advanced -> Custom Scan

Do not reboot the computer until this window has closed





EyeOnBoard Application Software

Quick Start

Step 5 of 9

5. Activate EyeOnBoard Application Software

In order to connect a specific onboard computer to its corresponding EyeOnBoard web site account, you must activate the EyeOnBoard Application Software on a SINGLE on-board computer.

- Download the EyeOnBoard Activation Software from the EyeOnBoard web site.
- Run the EyeOnBoard Activation Software.
- The settings will not take effect until the computer is rebooted one last time.
- Once rebooted, the EyeOnBoard Application Software should be activated and fully functional.
- To verify that the activation was successful, open the EyeOnBoard LaunchPad. You should see the name of your vessel in the title bar and the LaunchPad buttons should no longer be grayed out.

Note: In order to activate the software you need the EyeOnBoard Activation Software. The link to the Activation Software should have been emailed to you after the EyeOnBoard Application Software was successfully installed on your computer.

Please contact EyeOnBoard directly if you cannot locate the link to your Activation Software or if you have problems activating your software.



EyeOnBoard Activation

Please select an installer to download from the list below.

Available Installers

	Platform	without Java VM	Instructions
>	 Windows	Download (2.2M)	View

EyeOnBoard Application Software

Quick Start

Step 6 of 9

6. **Configure EyeOnBoard for GPS Capture**

Once the GPS is connected and tested, and the EyeOnBoard application software installed and activated, follow these steps to make them work together.

- Start the EyeOnBoard LaunchPad.
- Select Settings.
- Select System tab in Settings dialog.
- Select the GPS Wizard

Launch the GPS Wizard



EyeOnBoard Settings

Lost Broadband | Alert Limits | System

WiFi Service Provider login information

Username:

Password:

Password:

Peripheral Device Configuration

Security Enabled

Controller:

Select UIO for PCM-UIO controller

Port speed: 9600 baud, 8-N-1

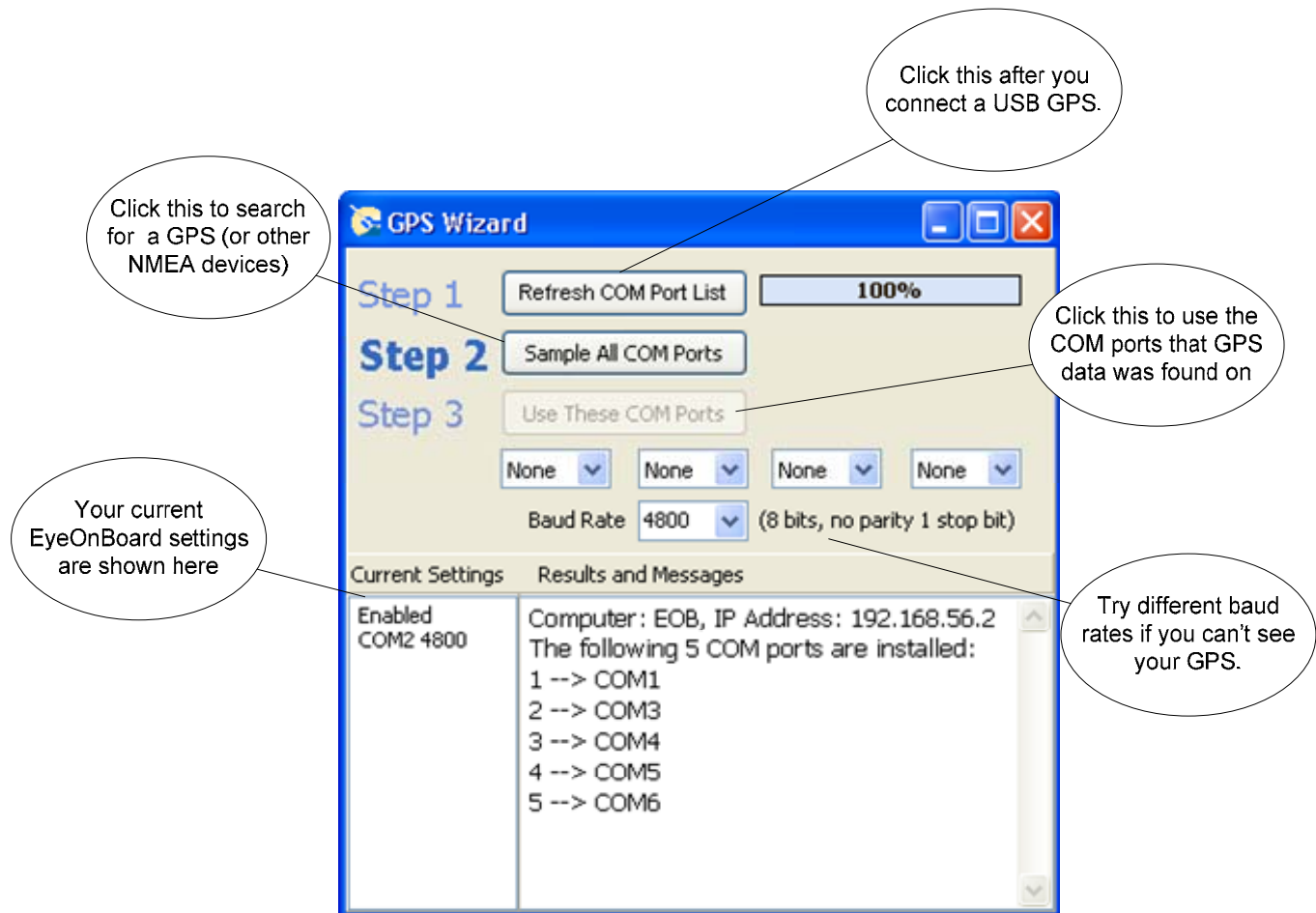
EyeOnBoard Application Software

Quick Start

Step 7 of 9

7. Use the GPS Wizard

- Click “Sample All COM Ports” to locate your GPS or other NMEA “talkers” such as a sounder, anemometer, compass and/or energy meter.
- The “Current Settings” panel shows how the system is currently configured.
- The COM Ports where NMEA data is found will be selected (up to four) after “Sample All COM Ports” is clicked.
- The selected COM Ports can be changed manually if necessary.
- Click “Use These COM Ports” to apply the selected ports to the EyeOnBoard configuration.



The screenshot shows the 'GPS Wizard' application window. It is divided into three steps: Step 1 (Refresh COM Port List), Step 2 (Sample All COM Ports), and Step 3 (Use These COM Ports). Below the steps are four dropdown menus for selecting COM ports, all currently set to 'None', and a Baud Rate dropdown set to '4800'. The bottom section is split into 'Current Settings' and 'Results and Messages'. The 'Current Settings' panel shows 'Enabled COM2 4800'. The 'Results and Messages' panel displays the computer's IP address (192.168.56.2) and a list of installed COM ports (COM1 through COM6).

Callout boxes provide the following instructions:

- Click this to search for a GPS (or other NMEA devices) - points to the 'Sample All COM Ports' button.
- Click this after you connect a USB GPS. - points to the 'Refresh COM Port List' button.
- Click this to use the COM ports that GPS data was found on - points to the 'Use These COM Ports' button.
- Your current EyeOnBoard settings are shown here - points to the 'Current Settings' panel.
- Try different baud rates if you can't see your GPS. - points to the 'Baud Rate' dropdown menu.

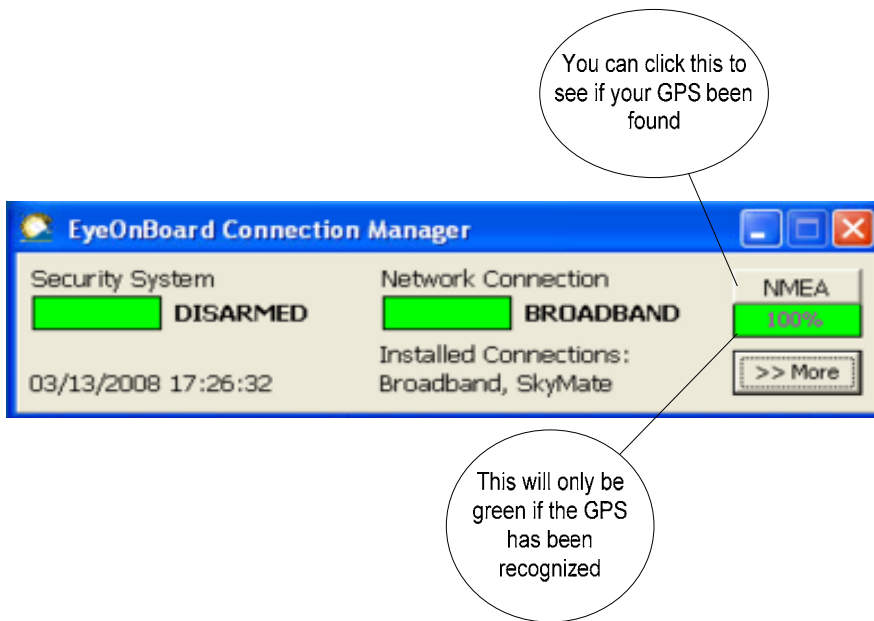
EyeOnBoard Application Software

Quick Start

Step 8 of 9

8. Confirm the GPS is operational

- Run the LaunchPad->Connections to see if NMEA data is being received. It should turn green within a minute or two.
- Click on the NMEA button to see which devices are connected, and which are operational.
- You should see data collected from your vessel appear on the EyeOnBoard web site within **fifteen minutes**.

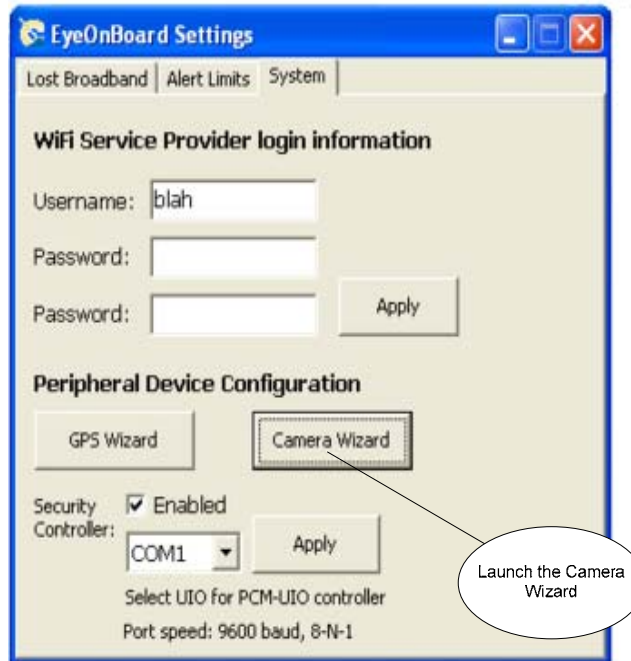


9. Activate Cameras

In order to connect a specific on-board camera to its corresponding EyeOnBoard web site account, each camera must be individually activated. You should have received a camera Key with each camera you purchased.

- Start the EyeOnBoard LaunchPad.
- Select Settings.
- Select System tab in Settings dialog.
- Select the Camera Wizard

Note: the Camera Wizard button will only be visible if the EyeOnBoard Application Software is installed, activated, and running and the computer has an active Internet connection.



EyeOnBoard Settings

Lost Broadband | Alert Limits | System

WiFi Service Provider login information

Username:

Password:

Password:

Peripheral Device Configuration

Security Enabled

Controller:

Select UIO for PCM-UIO controller

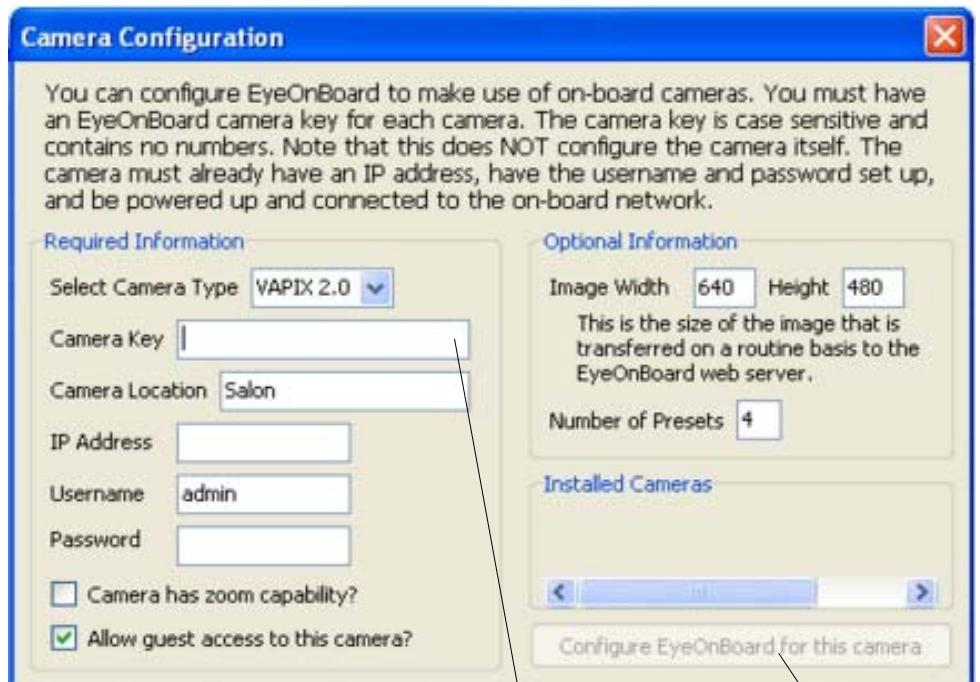
Port speed: 9600 baud, 8-N-1

Launch the Camera Wizard

Use the Camera Configuration Form

- Fill in the required information for each camera.
- A unique camera key is shipped with each camera.
- You cannot use the same key for two different cameras that are installed at the same time.
- This form can be used repeatedly if you have more than one camera or if you wish to change the settings of a camera that is already activated.
- You can copy and paste a Camera Key from the "Installed Cameras" area to avoid having to retype it.

Note: This does NOT configure the camera itself. It simply configures the EyeOnBoard Application Software to use an installed camera. The camera must be physically installed, configured with an IP address and username/password, be powered up, and be accessible from the computer before it can be activated. Refer to the camera installation guide.



Camera Configuration

You can configure EyeOnBoard to make use of on-board cameras. You must have an EyeOnBoard camera key for each camera. The camera key is case sensitive and contains no numbers. Note that this does NOT configure the camera itself. The camera must already have an IP address, have the username and password set up, and be powered up and connected to the on-board network.

Required Information

Select Camera Type:

Camera Key:

Camera Location:

IP Address:

Username:

Password:

Camera has zoom capability?

Allow guest access to this camera?

Optional Information

Image Width: Height:

This is the size of the image that is transferred on a routine basis to the EyeOnBoard web server.

Number of Presets:

Installed Cameras

Enter the Camera Key

This button will become active when the settings are valid